



THE HARDING



THE HARDING Model number: 74DYN16783BH19
3 beds • 2 baths • 1248 sq.ft. • 16' width • 78' depth

Our home building facilities invest in continuous product and process improvements. Plans, dimensions, features, materials, specifications and availability are subject to change without notice or obligation. Renderings and floor plans are representative likenesses of our homes and may differ from the actual homes. We invite you to tour a Home Center near you and inspect the highest value in quality housing available or call (501) 205-1913 to speak with a Home Consultant. Copyright 2017, CMH. All rights reserved.

<https://www.claytonhomesofconway.com>

**CLAYTON HOMES-
CONWAY**

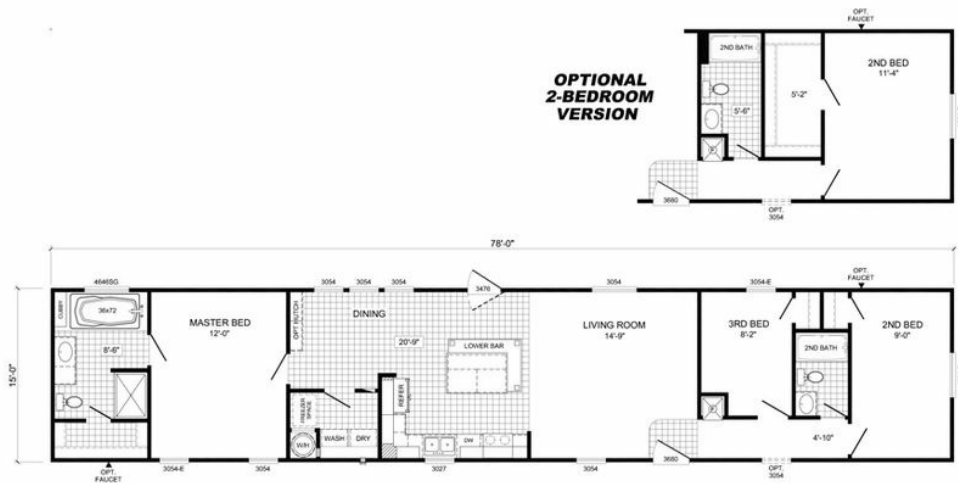
**1350 EAST DAVE WARD
DRIVE
CONWAY, AR 72032**

Monday - Thursday: 9am to 6pm
Friday: 9am to 6pm
Saturday: 9am to 5pm
Sunday: Closed

(501) 205-1913



THE HARDING



THE HARDING

Model number: 74DYN16783BH19

3 beds • 2 baths • 1248 sq.ft. • 16' width • 78' depth

Our home building facilities invest in continuous product and process improvements. Plans, dimensions, features, materials, specifications and availability are subject to change without notice or obligation. Renderings and floor plans are representative likenesses of our homes and may differ from the actual homes. We invite you to tour a Home Center near you and inspect the highest value in quality housing available or call (501) 205-1913 to speak with a Home Consultant. Copyright 2017, CMH. All rights reserved.

<https://www.claytonhomesofconway.com>

CLAYTON HOMES-
CONWAY

1350 EAST DAVE WARD
DRIVE
CONWAY, AR 72032

Monday - Thursday: 9am to 6pm
Friday: 9am to 6pm
Saturday: 9am to 5pm
Sunday: Closed

(501) 205-1913